



Elephant Box Park

Audio Overview

Audio Mapping

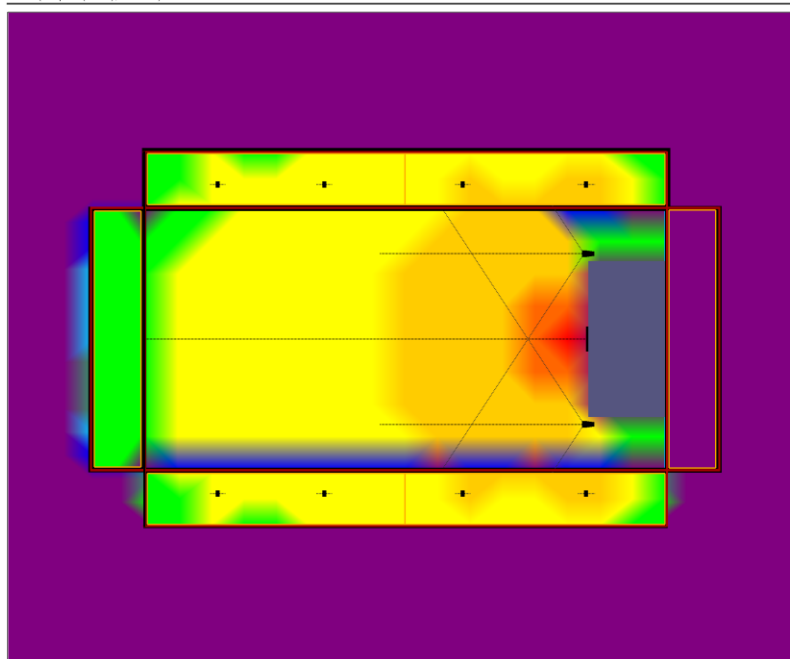
Please see within this brief document the proposed audio systems maximum SPL calculations mapped within a model of the venue with a listening plane surrounding the modelled venue. To clarify the calculations are using broadband pink noise as a measurement. Please see figure 1.1 for a plan view and figure 1.2 for a ISO view.

Figure 1.1

ArrayCalc V9.0 R004 Project: Default project Date: 31.01.17 Author: array-expert

3D plot

Live (BB pink (linear), 6.0 dBU)



**d&b
audiotechnik**

SPL calculation

Resolution:	Mid (2m)
Highest SPL:	123.4 dB

Simulated signal

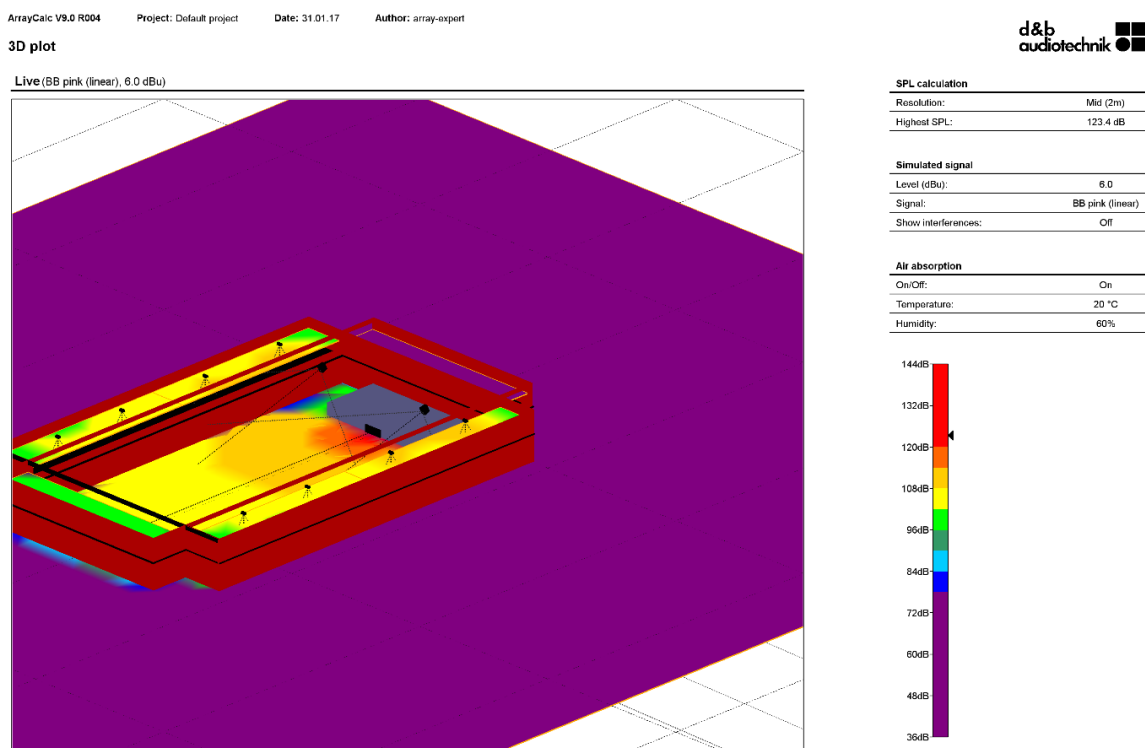
Level (dBU):	6.0
Signal:	BB pink (linear)
Show interferences:	Off

Air absorption

On/Off:	On
Temperature:	20 °C
Humidity:	60%



Figure 1.2



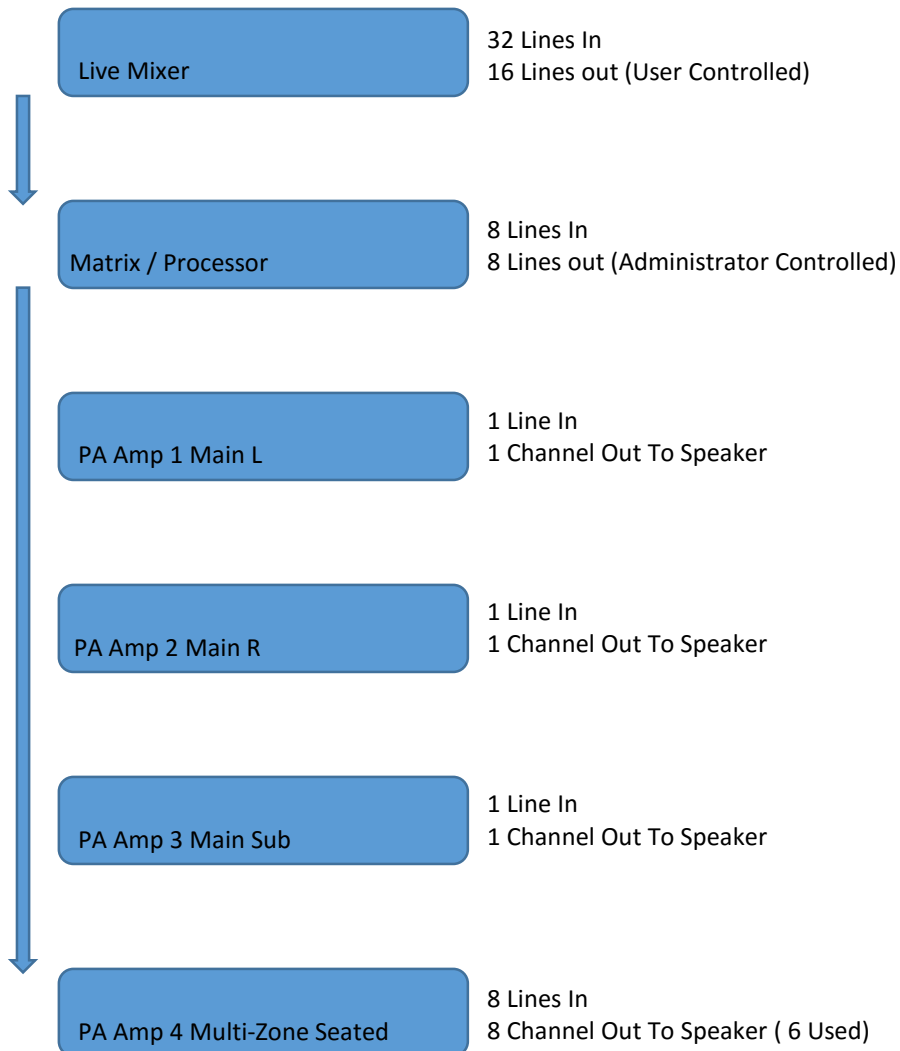
Audio Schematic

A quick overview of the proposed schematic follows in diagram form (figure 2.1) illustrating the signal path through the audio system. The audio system can be limited over the required individual zones, limits set by the administrator and access blocked to a user who would have control over volumes within permitted parameters

Audio Schematic

A quick overview of the proposed schematic follows in diagram form (figure 2.1) illustrating the signal path through the audio system. The audio system can be limited over the required individual zones, limits set by Limiters by the administrator and access blocked to a user who would have control over volumes within permitted parameters.

Figure 2.1



Proposed Equipment

- Control
- 1 Yamaha LS9-32 Digital mixing console
- 1 MTX3 Matrix Processor

- FOH PA
- 2 D&B Q7
- 2 D&B Q7 flying frame C/W Hook clamp & stand adaptor
- 3 D&B Digital E-pack Mono Amplifier
- 1 D&B B2 sub (c/w NL4 > EP5)
- 1 Rack & Power Distro

- Seated Zones (x6)
- 6 EVID FM4.2 Flush Mount Speaker (pair)
- 1 XMV8140 Power Amp